



CASH VALVE TYPE E-55 PRESSURE REGULATOR INSTALLATION INSTRUCTIONS

Before installation, these instructions must be read carefully and understood.

DESCRIPTION

The Type E-55 pressure reducing and regulating valve automatically reduces a high inlet pressure to a lower delivery pressure and maintains the lower pressure within close limits even during high flow rates.

SPECIFICATION DATA

Service: Air, water, oil, gases (except steam), and liquids not corrosive to brass.
Sizes: 1¼", 1½" and 2"
Connections: Threaded internal inlet and outlet
Body: Bronze
Maximum Temperature: 180°F (82.2°C)
Maximum Initial Pressure: 400 psi (27.6 bar)

Capacity:

For specific capacity information, consult the factory.

GENERAL INSTALLATION INSTRUCTIONS

Type E-55 regulators should be installed in the horizontal position with the spring chamber upright. For other installation requirements, consult the factory. For ease of operation and maintenance, it is suggested that manual shut-off valves be installed upstream and downstream from the valve and a pressure gauge between the regulator and the downstream valve. Before installing the valve, the piping and valve should be thoroughly flushed out to remove any foreign material. Install the valve with the inlet pipe fitted to the inlet connection identified on the valve body. Use a good pipe joint compound on the male pipe threads and do not over tighten the valve connections.

CONSTRUCTION

See component description for materials of construction.

All parts commercially cleaned for cryogenic service.

OPERATING INSTRUCTIONS

Adjusting the Delivery Pressure:
The regulator's delivery pressure setting is adjusted by turning the adjusting screw (1) at the top of the spring chamber (3) after loosening the adjusting screw lock nut (2). To increase the delivery pressure, turn the adjusting screw clockwise (into the spring chamber). To decrease the delivery pressure, turn the adjusting screw counter-clockwise (out of the spring chamber). Tighten the adjusting screw lock nut after the adjustment has been made. Open a valve or faucet downstream to draw flow and close to check the pressure setting after each adjustment.

MAINTENANCE INSTRUCTIONS

CAUTION

Before attempting to service the regulator be sure to shut off the supply pressure and relieve all pressure from BOTH sides of the valve.

Refer to the Type E-55 regulator section view for parts identification.

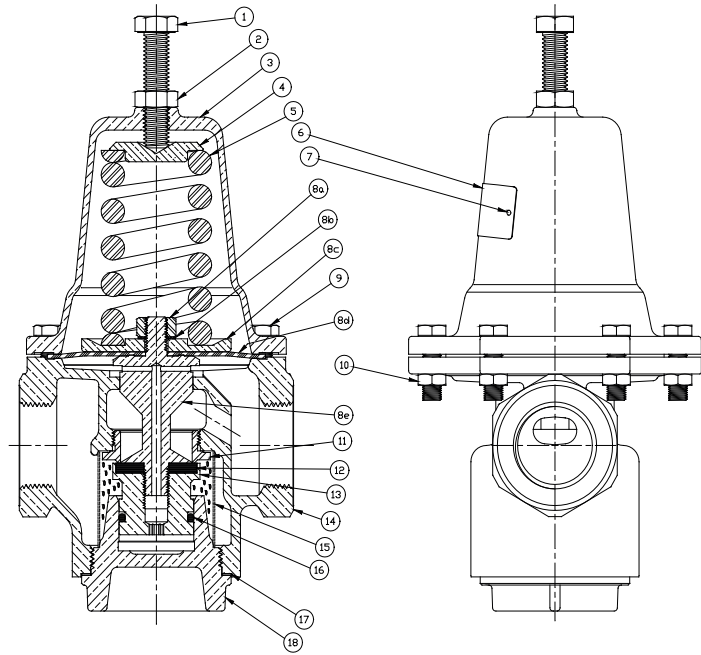
It is not necessary to remove the valve from the line for servicing.

CASH VALVE TYPE E-55

PRESSURE REGULATOR INSTALLATION INSTRUCTIONS

No.	Component Description	Construction
1	Adjusting Screw	Steel
2	Lock Nut	Steel
3	Spring Chamber	Bronze
4	Spring Button	Brass
5	Pressure Spring	Steel
6	Name Plate	Aluminum
7	Drive Screw	SST
8	Diaphragm Sub	
8a	Nut	Steel
8b	Washer	Steel
8c	Pressure Plate	Brass
8d	Diaphragm	Buna-N
8e	Pusher Post	Brass
9	Screw	Steel
10	Nut	Steel
11	Seat Ring	SST
12	Seat Disc	Buna-N
13	Piston	Brass
14	Body	Bronze
15	Screen	Monel
16	O-ring	Buna-N
17	Gasket	Polypropylene
18	Bottom Plug	Bronze

FIGURE 1



Neither Emerson, Emerson Automation Solutions, nor any of their affiliated entities assumes responsibility for the selection, use or maintenance of any product. Responsibility for proper selection, use, and maintenance of any product remains solely with the purchaser and end user.

Cash Valve is a mark owned by one of the companies in the Emerson Automation Solutions business unit of Emerson Electric Co. Emerson Automation Solutions, Emerson and the Emerson logo are trademarks and service marks of Emerson Electric Co. All other marks are the property of their respective owners.

The contents of this publication are presented for informational purposes only, and while every effort has been made to ensure their accuracy, they are not to be construed as warranties or guarantees, express or implied, regarding the products or services described herein or their use or applicability. All sales are governed by our terms and conditions, which are available upon request. We reserve the right to modify or improve the designs or specifications of such products at any time without notice.