



CASH VALVE™ TYPE B 1¼" TO 2" WATER/AIR/LIGHT OIL PRESSURE REGULATOR INSTALLATION INSTRUCTIONS

Before installation, these instructions must be carefully read and understood.

WARNING

Failure to follow these instructions or to properly install and maintain this equipment could result in an explosion, fire and/or chemical contamination causing property damage and personal injury or death.

Cash Valve regulators must be installed, operated and maintained in accordance with federal, state and local codes, rules and regulations and Emerson Process Management Regulator Technologies, Inc. (Emerson) instructions.

If the regulator vents gas or a leak develops in the system, service to the unit may be required. Failure to correct trouble could result in a hazardous condition.

Installation, operation and maintenance procedures performed by unqualified personnel may result in improper adjustment and unsafe operation. Either condition may result in equipment damage or personal injury. Only a qualified person shall install or service the B Series regulator

CALIFORNIA PROPOSITION 65 WARNING

This product can expose you to chemicals including lead, which is known to the State of California to cause cancer, birth defects, or other reproductive harm. For more information, go to www.P65Warnings.ca.gov

INTRODUCTION

Scope of the Manual

This manual provides instructions for the installation, adjustment, and maintenance for the B Series pressure regulators.

DESCRIPTION

The Type B pressure reducing and regulating valve automatically reduces a high inlet pressure to a lower delivery pressure and maintains the lower pressure within reasonably close limits regardless of the pressure fluctuations on the inlet side of the valve.

SPECIFICATION DATA

Service: Water, Air, and other liquids

Sizes: 1¼", 1½", and 2"

Connections: Threaded internal inlet and outlet

Body Material: Iron, Bronze

Maximum Temperature: 180°F (82.2°C)

Maximum Initial Pressure:

Iron Body - 200 psi (13.8 bar)

Bronze Body - 400 psi (27.6 bar)

Capacity:

For specific capacity information, consult the factory.

GENERAL INSTALLATION INSTRUCTIONS

Install a Y-Type or equivalent strainer upstream of the Type B. The in-built strainer screen is secondary protection only.

The Type B regulator should be installed in the horizontal position with the spring chamber upright. For other installation requirements consult the factory. For ease of operation and maintenance, it is suggested that manual shutoff valves be installed upstream and downstream from the valve. Before installing the valve, the piping and the valve should be thoroughly flushed out to remove any foreign material. Install the valve with the inlet pipe fitted to the inlet connection identified on the valve body. Use a good pipe joint compound on the male pipe threads and do not over tighten the valve connections.

CONSTRUCTION

See component description for materials of construction.

OPERATING INSTRUCTIONS

Adjusting the Delivery Pressure

The regulator's delivery pressure setting is adjusted by turning the adjusting screw (2) or optional T-Handle (1) at the top of the spring chamber (5) after loosening the adjusting screw lock nut (3). To increase the delivery pressure, turn the adjusting screw clockwise (into the spring chamber). To decrease the delivery pressure, turn the adjusting screw counter-clockwise (out of the spring chamber). Tighten the adjusting screw lock nut after the adjustment has been made. Draw flow through the valve and shutoff, after adjustment, to check for proper set pressure.

MAINTENANCE INSTRUCTIONS

CAUTION

Before attempting to replace any spare parts, be sure to shut off all pressure connections to the valve. With the valve closed however, system pressure could still be locked between the shut off valve and the inlet and/or outlet sides of the regulator. Before proceeding with any valve service be certain to relieve the pressure from both sides of the regulator.

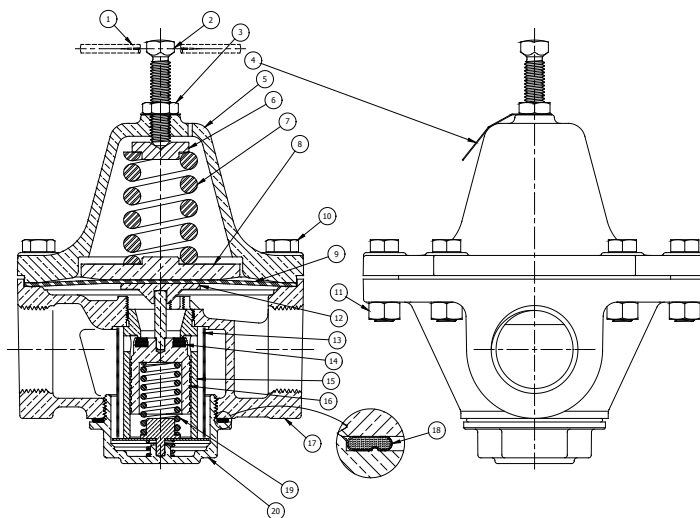
Refer to section view for parts identification. Repair parts can easily be installed without removing the regulator from the line.

CASH VALVE™ TYPE B 1¼" TO 2"

WATER/AIR/LIGHT OIL PRESSURE REGULATOR INSTALLATION INSTRUCTIONS

No.	Component Description	Construction
1	T-Handle Sub (Optional)	Steel
2	Adjusting Screw	Steel
3	Lock Nut	Steel
4	Name Plate	Aluminum
5	Spring Chamber	Bronze or Iron
6	Spring Button	Steel, Iron or Brass
7	Pressure Spring	Steel
8	Pressure Plate	Brass
9	Diaphragm	Buna-N
10	Screw	Steel
11	Nut	Steel
12	Pusher Post Button	Brass
13	Screen	SST or Monel
14	Seat Disc	Buna-N
15	Cylinder	Brass
16	Piston & Post	Brass
17	Body	Bronze or Iron
18	Gasket	Fiber / Copper
19	Piston Spring	SST
20	Bottom Plug	Bronze or Iron

FIGURE 1



VCIOM-10794-EN © 2019, 2022 Emerson Electric Co. All rights reserved 01/22. Cash Valve is a mark owned by one of the companies in the Emerson Automation Solutions business unit of Emerson Electric Co. The Emerson logo is a trademark and service mark of Emerson Electric Co. All other marks are the property of their prospective owners.

The contents of this publication are presented for informational purposes only, and while every effort has been made to ensure their accuracy, they are not to be construed as warranties or guarantees, express or implied, regarding the products or services described herein or their use or applicability. All sales are governed by our terms and conditions, which are available upon request. We reserve the right to modify or improve the designs or specifications of such products at any time without notice.

Emerson Electric Co. does not assume responsibility for the selection, use or maintenance of any product. Responsibility for proper selection, use and maintenance of any Emerson Electric Co. product remains solely with the purchaser.

Emerson.com